

3
BED

Ideal Starter Home in Popular Family Location

2, Dymock Close, Seaford, BN25 3TW



£375,000

Freehold

phillipmann
we do more

www.phillipmann.com



inbrief...

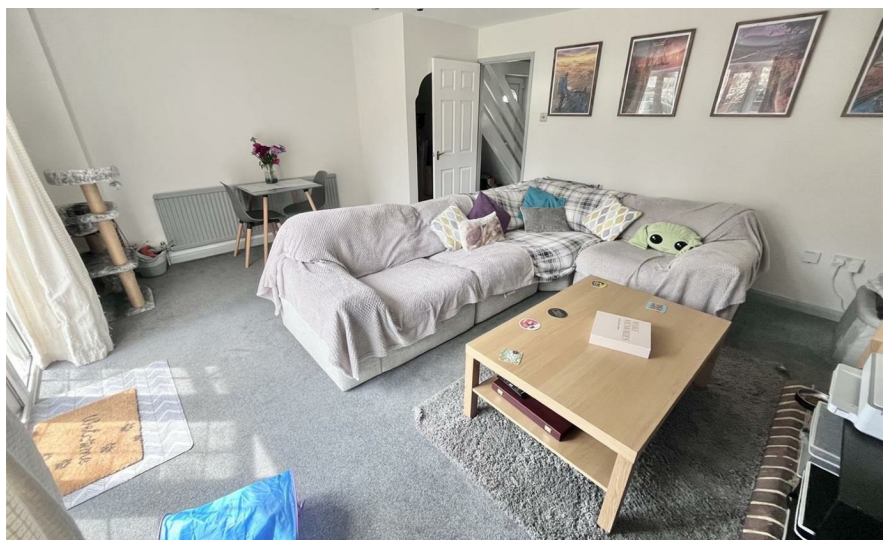
This detached house is located in a popular location for families having a good primary school close by along with recreational area, play park and post office/general store on Walmer Road. There is a good local bus service on Walmer Road into Seaford town which is within a mile and a half of the property and offers a good range of shops, train station and Seaford beach. The property has the benefit of gas central heating with modern boiler and double glazed windows. There is a garage in compound opposite the property with additional parking in front. As you approach the property there is a wall enclosed front garden and gated side access.

The entrance hall has a recessed cloaks cupboard and cloakroom/WC.

The good size kitchen 10'7 x 10'2 is fitted with a good range of 'Shaker' style wall and base units, complemented by ample working surface with inset sink unit, gas hob with extractor canopy and electric oven, integrated dish washer and space for fridge/freezer and washing machine. There is a wall mounted 'Worcester' boiler, window to front and door to side access.

To the rear of the property the spacious lounge/dining room 16'11 x 13'10 has a brick fire surround, under stair recess, ample space for a dining table and double doors to the rear garden. On the first floor landing there is a picture window, double airing cupboard and loft access. The bathroom comprises a bath, WC, wash basin and separate shower cubicle with electric shower and tiled surround.

Bedroom one 13' x 8'10 has a window to the front, whilst bedroom three 6'2 x 6' has a recessed cupboard and would be an ideal study. Bedroom two 11'4' x 10'5 is also a good size double and has an outlook over the rear garden. The rear garden has a favoured south aspect and has a patio area, level lawn and is fence enclosed.



Energy Rating - C

Council Tax Band - C

moreinfo...

Phillip Mann Seaford Office
1-3 Dane Road, Seaford, East Sussex, BN25 1LG
01323 898666



To see more details on this & all our homes go to
www.phillipmann.com